



Bright Futures

TEACHING SCHOOL HUBS

TRAFFORD & SALFORD

MANCHESTER & STOCKPORT

National Professional Qualifications October 2024

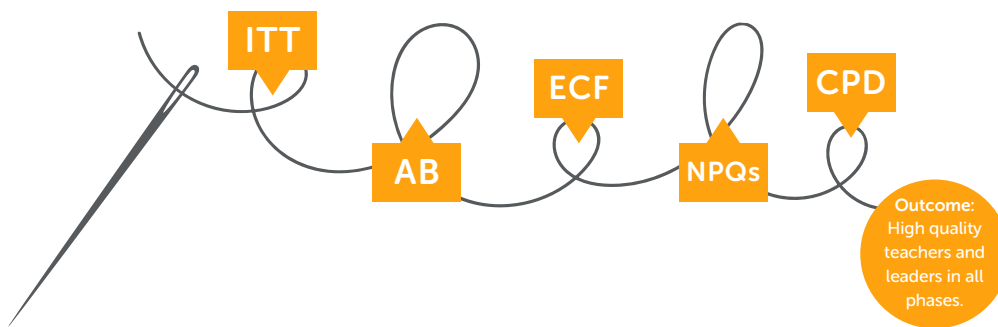
In partnership with



Introduction

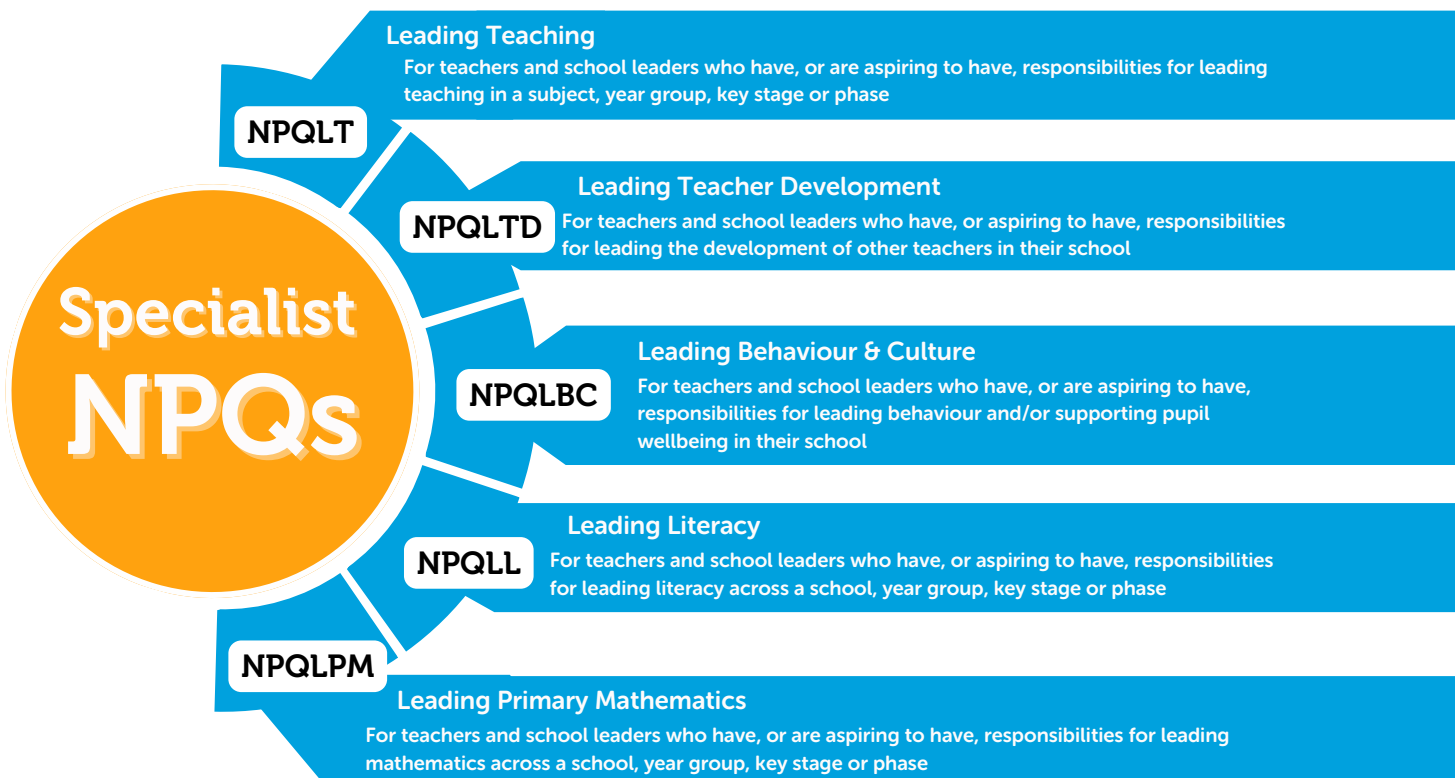
National Professional Qualifications (NPQs) are the most widely recognised qualifications in the education sector for current and aspiring leaders. We're delighted to be partnered with one of a select group of national Lead Providers to design, deliver and assess the full suite of NPQs. We're working in collaboration with Teach First to lead the NPQs in our region, including delivering seminars and conferences, sharing guidance and support.

The NPQs complete the golden thread of continuing professional development (CPD) for teachers, from the early stages of teacher development with the Early Career Framework (ECF) through to executive leadership, delivering the new generation of NPQs.



The refreshed and reformed suite of NPQs is designed to offer the best possible support to teachers and leaders at all levels. From those wanting to develop expertise in high-quality teaching experience practice to those leading multiple schools.

There are five specialist NPQs for teachers and school leaders who want to broaden their expertise in particular areas. The following programmes are for those who have, or are aspiring to have, responsibilities for leading teaching in a subject or year, leading behaviour and/or supporting pupil wellbeing in their school, leading the development of other teachers, leading literacy in their school or leading mathematics:



For those looking to progress into senior leadership and beyond, the following leadership NPQs build foundational knowledge to rapidly progress your school's or trust's key improvement priorities – all while creating and embedding a culture that allows your school, staff and pupils to thrive:



What can NPQs do for your school and what funding is available?

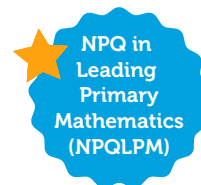
Great development opportunities and ongoing support helps teachers thrive. That's why our NPQ programmes are so valuable – they keep talented teachers and leaders in their schools for the long term and equip them with the expertise to make a difference to their pupils.

Our NPQs support motivated teachers who want to take the next step on their leadership journey. Teachers will develop core knowledge and skills to prepare them for the long-term, as well as gaining the tools, examples and practice to start making a positive impact in their school straight away. They'll also become part of a wider network of leaders and schools, all attempting to give young people from the poorest backgrounds the best shot at success.

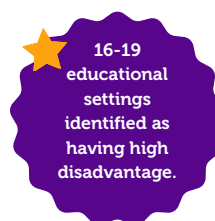
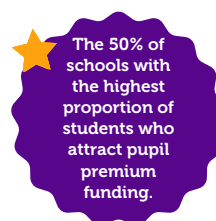


FUNDING ANNOUNCEMENT

NPQ scholarships will continue to be available to all teachers and leaders from publicly funded schools and 16-19 educational organisations for the following:



Funding covering all NPQs will be available to teachers and leaders from:



For more details on funding, please visit www.tsh.bright-futures.co.uk/national-professional-qualifications/npq-funding-information/

NPQ in Leading Teaching (NPQLT)

Who is it for?

For teachers and school leaders who have, or are aspiring to have, responsibilities for leading teaching in a subject or year. For example, head of subject, key stage head or head of department.

What will I learn?

You'll develop the knowledge, skills and expertise to lead high-quality teaching and curriculum development in your context.

Modules include:

- Teaching
- Implementation
- School culture
- How pupils learn
- Classroom practice
- Subject and curriculum
- Adaptive teaching
- Assessment
- Professional development

Delivery model, duration and programme breakdown

The NPQLT is delivered using a blend of online 'live' seminars, flexible online learning and face-to-face conferences.

NPQLT at a glance...

Course Duration | 12 months
Welcome & First Seminar | Face-to-face event
Online Seminars | 8 x 1 Hour sessions
Conference Days | 2x Face-to-face events
Programme Start | October 2024
Final Assessment | Open-book case study scenario

How do I apply?

Applications are now open for October 2024 cohort, please visit our website:
www.tsh.bright-futures.co.uk

NPQ in Leading Teacher Development (NPQLTD)

Who is it for?

For teachers and school leaders who have, or are aspiring to have, responsibilities for leading the development of other teachers in their school, for example CPD lead or ITT lead.

What will I learn?

You will develop the knowledge, skills and expertise to lead the development of teachers, including sequencing and structuring professional development and effective coaching and mentoring.

Modules include:

- Teaching
- Implementation
- Professional learning culture
- Determining priorities
- Building knowledge
- Professional development resources
- Embedding expertise
- Expert-led conversations
- ITT and ECF provision

Delivery model, duration and programme breakdown

The NPQLTD is delivered using a blend of online 'live' seminars, flexible online learning and face-to-face conferences.

NPQLTD at a glance...

Course Duration | 12 months
Welcome & First Seminar | Face-to-face event
Online Seminars | 8 x 1 Hour sessions
Conference Days | 2x Face-to-face events
Programme Start | October 2024
Final Assessment | Open-book case study scenario

How do I apply?

Applications are now open for October 2024 cohort, please visit our website:
www.tsh.bright-futures.co.uk



The NPQLTD is also aimed at current and future initial teacher training (ITT) lead mentors based in other settings such as universities who are looking to effectively mentor trainee teachers.

NPQ in Leading Behaviour & Culture (NPQLBC)

Who is it for?

For teachers and school leaders who have, or are aspiring to have, responsibilities for leading behaviour and/or supporting pupil wellbeing in their school. For example, heads of year or roles with other pastoral responsibilities.

What will I learn?

You'll develop the knowledge, skills and expertise to lead effective approaches to behaviour, pupil wellbeing and a whole school culture.

Modules include:

- Teaching
- Implementation
- School culture
- Setting expectations
- Enabling others
- Motivation and self-regulation
- Intensive behaviour support
- Partnership working
- Professional development

Delivery model, duration and programme breakdown

The NPQLBC is delivered using a blend of online 'live' seminars, flexible online learning and face-to-face conferences.

NPQLBC at a glance...

Course Duration | 12 months
Welcome & First Seminar | Face-to-face event
Online Seminars | 8 x 1 Hour sessions
Conference Days | 2x Face-to-face events
Programme Start | October 2024
Final Assessment | Open-book case study scenario

How do I apply?

Applications are now open for October 2024 cohort, please visit our website:
www.tsh.bright-futures.co.uk

NPQ in Leading Literacy (NPQLL)

Who is it for?

For teachers and school leaders who have, or are aspiring to have, responsibilities for leading literacy across a school, year group, key stage or phase.

What will I learn?

You will develop the knowledge, skills and expertise to effectively develop others and lead a powerful school literacy strategy.

Modules include:

- Teaching
- Implementation
- Developing language
- Learning to read
- Reading comprehension
- Championing reading
- Learning to write
- Developing writing
- Professional development

Delivery model, duration and programme breakdown

The NPQLL is delivered using a blend of online 'live' seminars, flexible online learning and face-to-face conferences.

NPQLL at a glance...

Course Duration | 12 months
Welcome & First Seminar | Face-to-face event
Online Seminars | 8 x 1 Hour sessions
Conference Days | 2x Face-to-face events
Programme Start | October 2024
Final Assessment | Open-book case study scenario

How do I apply?

Applications are now open for October 2024 cohort, please visit our website:
www.tsh.bright-futures.co.uk



We're working with the [National Literacy Trust](https://www.national-literacy-trust.org/) as our expert facilitators for the NPQLL.

NPQ in Leading Primary Mathematics (NPQLPM)

Who is it for?

For teachers and school leaders who have, or are aspiring to have, responsibilities for leading mathematics across a school, year group, key stage or phase.

What will I learn?

You will develop the knowledge, skills and expertise that underpin effective leadership of mathematics and lead a powerful school mathematics strategy.

Modules include:

- Teaching
- School culture
- How pupils learn
- Subject and curriculum
- Classroom practice
- Adaptive teaching
- Assessment
- Professional development
- Implementation



Delivery model, duration and programme breakdown

The NPQLPM is delivered using a blend of online 'live' seminars, flexible online learning and face-to-face conferences.

NPQLPM at a glance...

Course Duration | 12 months
Welcome & First Seminar | Face-to-face event
Online Seminars | 8 x 1 Hour sessions
Conference Days | 2x Face-to-face events
Programme Start | October 2024
Final Assessment | Open-book case study scenario

How do I apply?

Applications are now open for October 2024 cohort, please visit our website:
www.tsh.bright-futures.co.uk

NPQ in Executive Leadership (NPQEL)

Who is it for?

For school leaders who are, or are aspiring to be, an executive headteacher or have a school trust CEO role with responsibility for leading several schools.

What will I learn?

You will develop and deepen executive leadership skills and knowledge built upon the latest evidence-based research.

Modules include:

- School culture
- Teaching
- Curriculum and assessment
- Behaviour
- Additional and special educational needs
- Professional development
- Organisational management
- Implementation
- Working in partnership
- Governance and accountability

Delivery model, duration and programme breakdown

The NPQEL is delivered using a blend of online 'live' seminars, flexible online learning and face-to-face conferences.

NPQEL at a glance...

Course Duration | 18 months
Online Seminars | 11 x 1 Hour sessions
Conference Days | 2x Face-to-face events
Trust/School Visit | Face-to-face event
One-to-one Calls | 3 Hours
Programme Start | October 2024
Final Assessment | Open-book case study scenario

How do I apply?

Applications are now open for October 2024 cohort, please visit our website:
www.tsh.bright-futures.co.uk

NPQ in Headship (NPQH)

Who is it for?

For school leaders who are, or are aspiring to be, a headteacher or head of school with responsibility for leading a school.

What will I learn?

You will develop the knowledge, skills and concepts for areas of whole-school responsibility related to your role as an aspiring or current headteacher.

Modules include:

- School culture
- Teaching
- Curriculum and assessment
- Behaviour
- Professional development
- Organisational management
- Implementation
- Working in partnership
- Governance and accountability
- Additional and special educational needs



Delivery model, duration and programme breakdown

The NPQH is delivered using a blend of online 'live' seminars, flexible online learning and face-to-face conferences.

NPQH at a glance...

Course Duration | 18 months
Welcome & First Seminar | Face-to-face event
Online Seminars | 10 x 1 Hour sessions
Conference Days | 2x Face-to-face events
Trust/School Visit | Face-to-face event
Programme Start | October 2024
Final Assessment | Open-book case study scenario

How do I apply?

Applications are now open for October 2024 cohort, please visit our website: www.tsh.bright-futures.co.uk

NPQ in Senior Leadership (NPQSL)

Who is it for?

For school leaders who are, or are aspiring to be, a senior leader with cross-school responsibilities.

What will I learn?

You will develop expertise in the knowledge, skills and concepts for areas of cross- and whole-school responsibility related to your role.

Modules include:

- School culture
- Teaching
- Curriculum and assessment
- Behaviour
- Additional and special educational needs
- Professional development
- Organisational management
- Implementation
- Working in partnership
- Governance and accountability

Delivery model, duration and programme breakdown

The NPQSL is delivered using a blend of online 'live' seminars, flexible online learning and face-to-face conferences.

NPQSL at a glance...

Course Duration | 18 months
Welcome & First Seminar | Face-to-face event
Online Seminars | 10 x 1 Hour sessions
Conference Days | 2x Face-to-face events
Trust/School Visit | Face-to-face event
Programme Start | October 2024
Final Assessment | Open-book case study scenario

How do I apply?

Applications are now open for October 2024 cohort, please visit our website: www.tsh.bright-futures.co.uk

NPQ in Early Years Leadership (NPQEYL)

Who is it for?

For leaders who are, or are aspiring to be, a nursery manager, headteacher of a school-based or maintained nursery, or childminder with leadership responsibilities.

What will I learn?

You will broaden your leadership knowledge and gain the specialist expertise needed to tackle your organisation's improvement priorities with content covering the breadth of knowledge you need as a leader.

Modules include:

- Organisational management
- Culture
- Assessment
- Professional development
- Working in partnership
- Implementation
- Child development and curriculum
- Communication, language and literacy
- Personal, social and emotional development
- Additional special educational needs and disabilities

Delivery model, duration and programme breakdown

The NPQEYL is delivered using a blend of online 'live' seminars, flexible online learning and face-to-face conferences.

NPQEYL at a glance...

Course Duration | 18 months
Welcome & First Seminar | Face-to-face event
Online Seminars | 10 x 1 Hour sessions
Conference Days | 2x Face-to-face events
Trust/School Visit | Face-to-face event
Programme Start | October 2024
Final Assessment | Open-book case study scenario

How do I apply?

Applications are now open for October 2024 cohort, please visit our website:
www.tsh.bright-futures.co.uk

NPQ for Special Educational Needs Coordinators (NPQSENCO)

Who is it for?

For leaders who are, or are aspiring to be, a SENCO or other senior leader with responsibility for leading SEND in the school.

What will I learn?

You will develop and deepen leadership skills and knowledge built upon the latest evidence-based research.

Modules include:

- School culture
- Implementation
- Statutory framework
- Identification and assessment
- Teaching
- Behaviour
- Partnership working
- Leading and managing provision
- Professional development



Delivery model, duration and programme breakdown

The NPQSL is delivered using a blend of online 'live' seminars, flexible online learning and face-to-face conferences.

NPQSENCO at a glance...

Course Duration | 18 months
Welcome & First Seminar | Face-to-face event
Online Seminars | 10 x 1 Hour sessions
Conference Days | 2x Face-to-face events
Trust/School Visit | Face-to-face event
Programme Start | October 2024
Final Assessment | Open-book case study scenario

How do I apply?

Applications are now open for October 2024 cohort, please visit our website:
www.tsh.bright-futures.co.uk

Early Headship Coaching Offer (EHCO)

Eligibility Criteria

1. You are in your first five years of headship
2. You are employed in a state-funded school, or are employed in a state-funded organisation that offers 16 to 19 places in England upon starting the training
3. You have either completed a national professional qualification for headship (NPQH) before taking up your first headship post, are applying for a NPQH, or are currently taking the NPQH
4. You have not withdrawn from the additional support programme previously

What will I learn?

Designed with busy headteachers in mind, the EHCO is delivered as a personalised learning journey. Sessions are led by you and the school leader, so you can focus on your own priorities.

This could include:

- Staffing
- Difficult conversations
- Self-development
- Behaviour
- Culture
- Effective implementation

EHCO at a glance...

Course Duration | 12 months
One-To-One Support | 5 coaching calls
Programme Start | October 2024
No Assessment

How do I apply?

Applications are now open for October 2024 cohort, please visit our website:
www.tsh.bright-futures.co.uk

How will the NPQs be assessed?

The assessment process for all NPQs has been refreshed to reduce the workload burden on teachers and leaders while still providing an opportunity to apply their knowledge. To pass the programme, programme members will need to engage with at least 90% of the programme and pass one summative assessment.

Assessment takes place within three months of programme members completing the NPQ. Dates will be shared before the start of the programme. Throughout the NPQ, programme members will participate in a range of formative assessment tasks to track progress and understanding. This will also support to demonstrate 90% engagement with the course.

The summative assessment will take the form of a case study which is a minimum of 2,000 words in length and will cover content referred to in the relevant NPQ Content Framework. It will represent a likely situation to be faced by a programme member at the relevant NPQ qualification level or role and will allow programme members to demonstrate understanding of the relevant NPQ Content Framework and offer an opportunity to demonstrate successfully applying this.

Programme members will have an eight-day window to provide a written response of a maximum of 1500 words for the case study (unless adjustments are required on an individual basis) in an 'open book' setting. Programme members will receive the unseen case study question at the start of the eight-day window; and submit responses by midnight of the eighth day.

We're here to help!

If you have any enquiries please get in touch with our team.